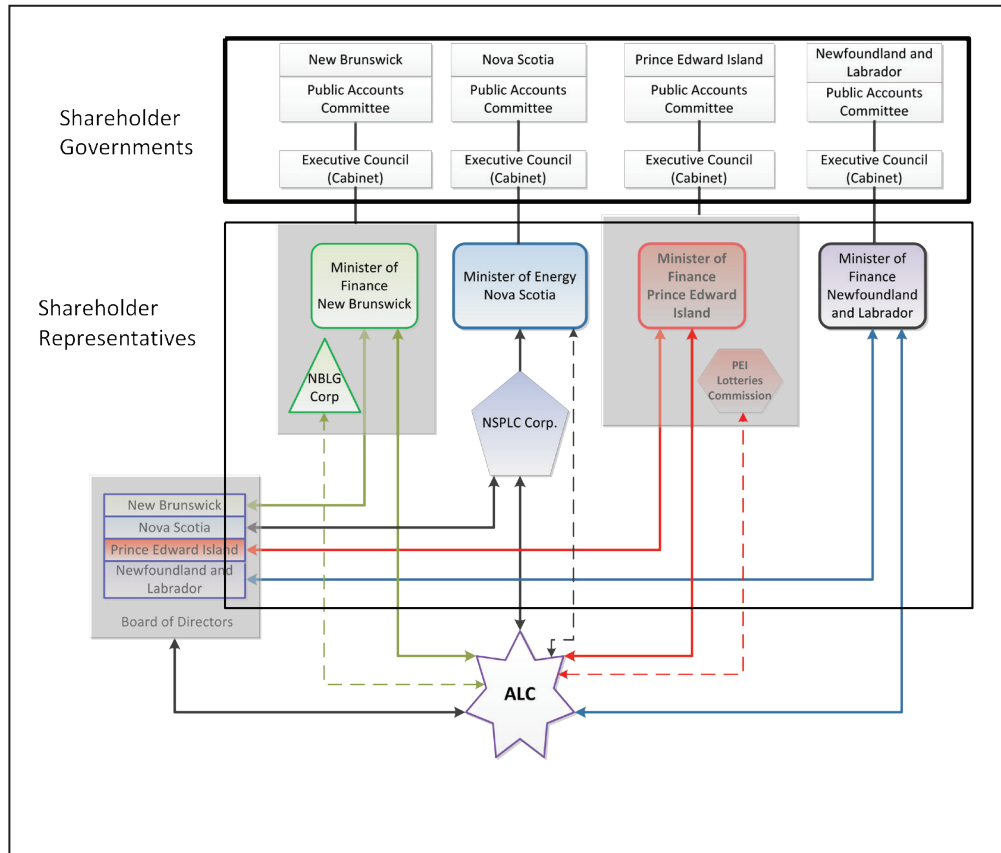


**Appendix IV: Entity Relationship – Diagram Mapping the Governance and Oversight Relationships of Atlantic Lottery Corporation**



*Prepared by OAG staff*

Note 1: Not reflected are the agent operator relationships associated with the agency agreement between Atlantic Lottery Corporation and Nova Scotia Provincial Lotteries and Casino Corporation. Also excluded are the regulatory components and relationships.

Atlantic Lottery Corporation executive (typically CEO) has a direct relationship with representatives within each provincial government and receives direction and input from each shareholder government. In the case of Nova Scotia however there is less of a direct relationship with the Minister. It is more often through Nova Scotia Provincial Lotteries and Casino Corporation, although there is still some direct interaction such as at the annual minister’s summit and as a Crown entity to the responsible Minister.